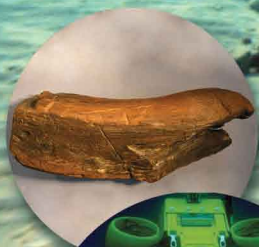


Offshore Industry and Archaeology:  
a creative relationship

# International Conference and Networking Event



14<sup>th</sup> - 15<sup>th</sup> March 2013  
Esbjerg, Denmark

 **cost**  
EUROPEAN COOPERATION  
IN SCIENCE AND TECHNOLOGY

**SPLASHCOS**  
Submerged Prehistoric Archaeology and  
Landscapes of the Continental Shelf  
[www.splashcos.org](http://www.splashcos.org)



**Conference rationale:** Offshore development and construction is one of the fastest growing industries. The data generated using developing technologies is providing new insights into the early human story. Evidence is being gathered on the now submerged prehistoric landscapes of occupation and how past peoples reacted to climate change. Therefore a creative relationship exists between industry which is gathering data and managing risks in the marine zone and archaeologists working to understand evidence of the past on the seafloor and what this means for our interpretation of the past.

**Conference Themes:** The two-day conference will address three key themes:

**- Industry and archaeology: case studies**

The contribution of industry to archaeology will be explored with presentations from major contributors such as Petroleum Geo-Services (PGS), who have provided essential datasets, and Rotterdam Mainport Development Project, who have integrated research on Prehistoric landscapes in dredging and construction offshore. Innovative scientific results obtained by the Birmingham University archaeological research group based on their collaboration with industry will be demonstrated through a presentation on Doggerland and its Prehistoric habitation.

**- Meeting Environmental Regulation Requirements**

Environmental regulations, spatial planning and the lack of consistency in cross-border regulations will be addressed on the basis of the Nordstream pipe-laying project through the Baltic, and similar cross-border projects. Presentations will address the issues from the perspective of project-development, archaeological research and cross-border heritage management.

**- Presentation of small and medium sized enterprises**

This networking element of the conference will enable companies specializing in survey, offshore archaeology services, data evaluation and consultancy to present their specialisms and services to the offshore industry, to heritage management and archaeology.

**Further Details:** The Conference is sponsored by the European COST programme (Cooperation in Science and Technology) through COST Action TD0902 SPLASHCOS (Submerged Prehistoric Archaeology and Landscapes of the Continental Shelf) and other partners. It is hosted by Offshore Centre Denmark and the Maritime Archaeology Programme at the University of Southern Denmark and will be held at the Esbjerg Campus of the University.

For further information, please contact Helle Kildebæk Raun ([hkraun@hist.sdu.dk](mailto:hkraun@hist.sdu.dk))